

FIRESTOP SYSTEMS

ProSet Systems, Inc.

1355 Capital Circle Lawrenceville, GA. 30043-5866 U.S.A.

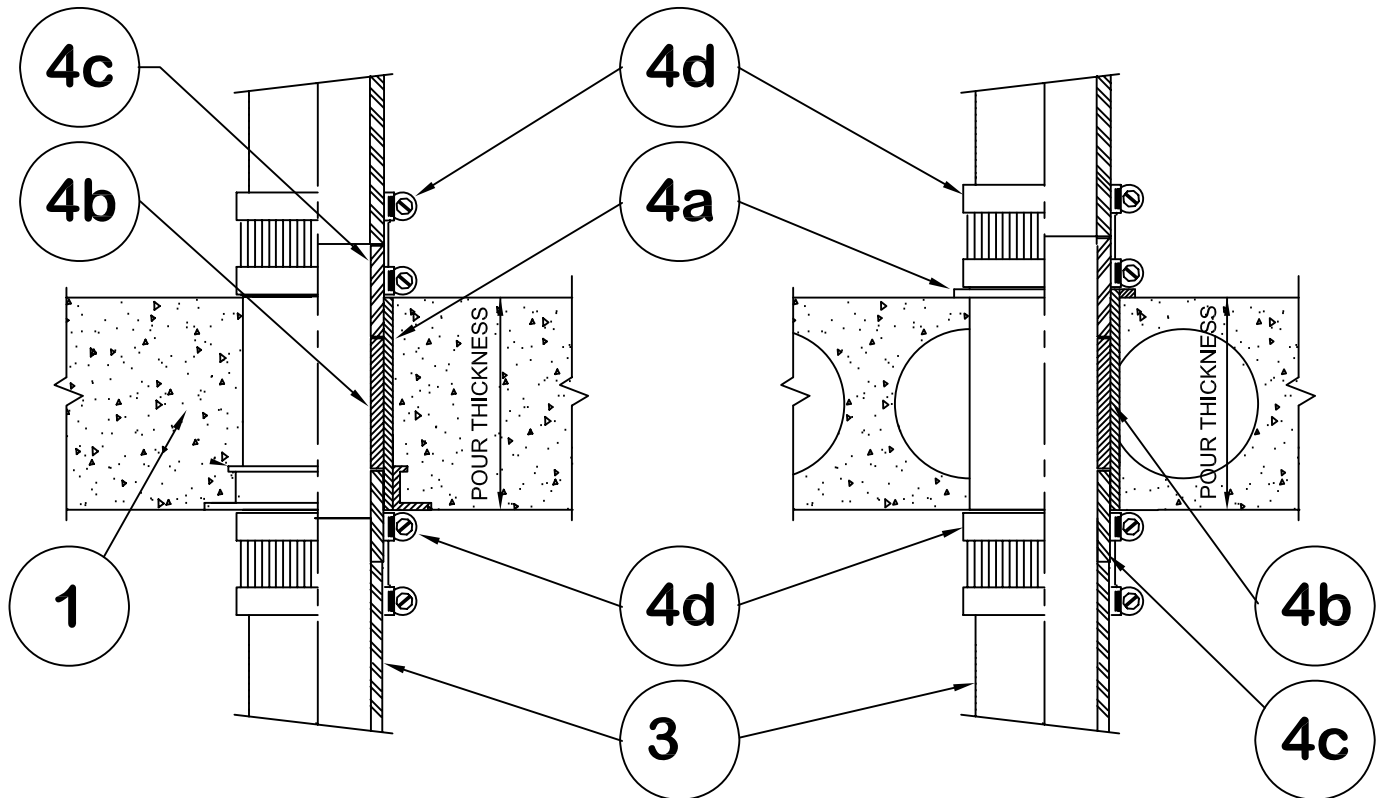
Design No. PS/PHV 120-06

Horizontal (Floor), Vertical (Wall) - See item 1.

Ratings: ASTM E-814 - 2 Hrs. (F), 70 Min. (T)

CAN/ULC-S115 - 2 Hrs. (F/FH), 2 Hrs. (FT/FTH)

Test Pressure Differential - 50 Pa (0.20 in. of Water) Minimum



1. Floor:

Minimum 4-1/2" thick normal density concrete slab or 7-1/2" thick hollowcore precast concrete floor units. Fluted decks with 2-1/2" concrete slab, rating is 1Hr F/FH.

When concrete or Hollow core is 7-1/2" or more the F/FH rating is 3 Hrs.

WALL:

Minimum 6" thick normal density concrete or any classified concrete block.

2. Pipe Support:

Vertical riser pipe is supported by connecting the pipe to the firestop device.

3. Pipe Material:

Cast iron, maximum diameter 6 in.

4. Firestop System Components:

4a. ProSet PVC Coupling*, cast-in-place, or Cored Hole Coupling*, length equal to slab thickness. Optional waterproofing caulk may be used under seal ring.

4b. PVC Sch. 40 pipe insert.

4c. ProSet P-90 Hi-Temp PVC fire rated pipe. When using 6" Cast Iron use Sch. 80 PVC.

4d. ProSet Mechanical Joint adaptor coupling.

*** Components Bearing the Warnock Hersey International Certification Mark.**