

FIRESTOP SYSTEMS

ProSet Systems, Inc.

1355 Capital Circle Lawrenceville, GA. 30043-5866 U.S.A.

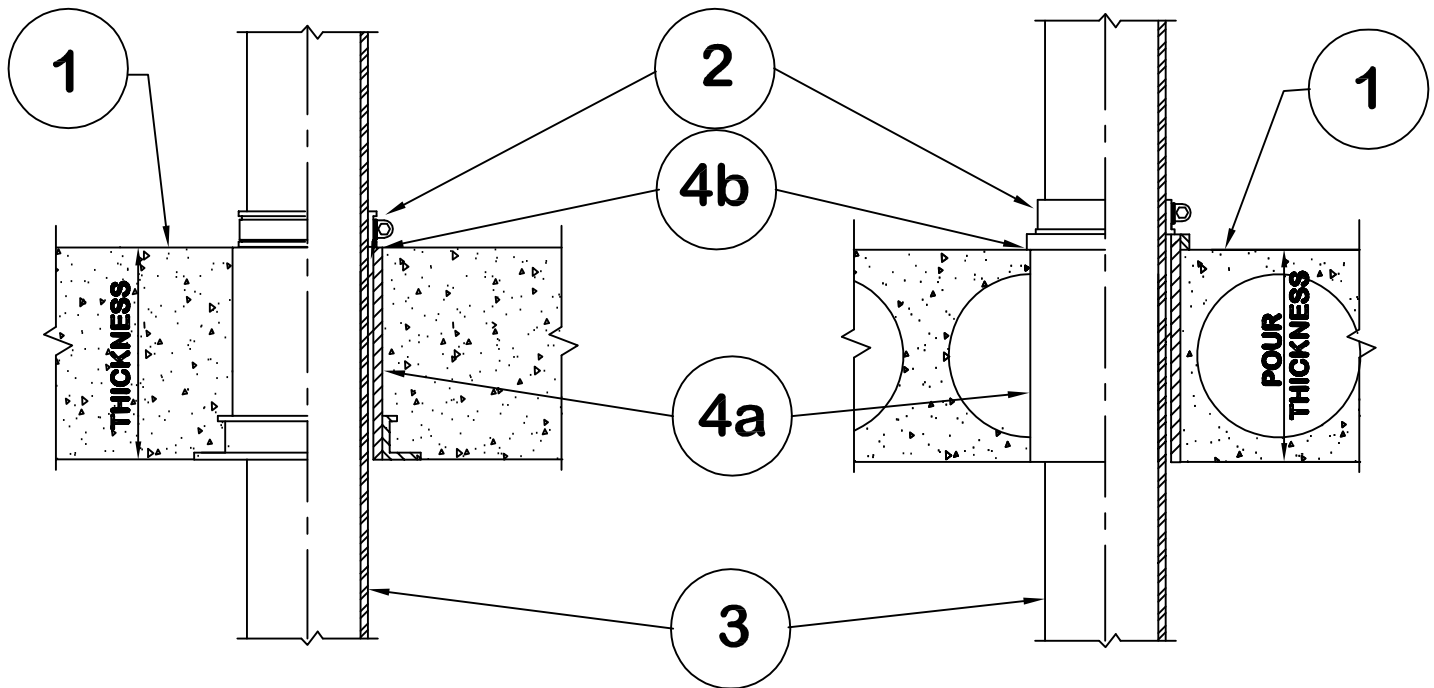
Design No. PS/PHV 180-01

Horizontal (Floor), Vertical (Wall) - See item 1.

Ratings: ASTM E-814 - 3 Hrs. (F), 30 Min. (T)

CAN/ULC-S115 - 3 Hrs. (F/FH), 30 Min. (FT/FTH)

Test Pressure Differential - 10 Pa (0.05 in. of Water) Minimum



1. Floor:

Minimum 4-1/2" thick normal density concrete slab or 7-1/2" thick hollowcore precast concrete floor units. Fluted decks with 2-1/2" concrete slab, rating is 1Hr F/FH.

WALL:

Minimum 6" thick normal density concrete slab.

2. Pipe Support:

ProSet Riser Clamp. - A ProSet Riser Clamp is required on both sides of a wall penetration. When the gap in between the clamps exceed 1/4", a silicone caulk can be used to seal the gap.

3. Pipe Material:

Maximum diameter 6" cast iron, steel, copper, or glass pipe.

4. Firestop System Components:

4a. ProSet PVC Coupling*, cast-in-place, or Cored Hole Coupling*, length equal to slab thickness.

4b. (Optional) ProSet Waterproofing Caulk PS 35.

Optional increase of T-Rating can be made by using a UL (BRGU) listed pipe covering material meeting a Flame Spread Index of 25 or less and a smoke developed index of 50 or less on the unexposed side side of the pipe penetration.

*** Components Bearing the Warnock Hersey International Certification Mark.**